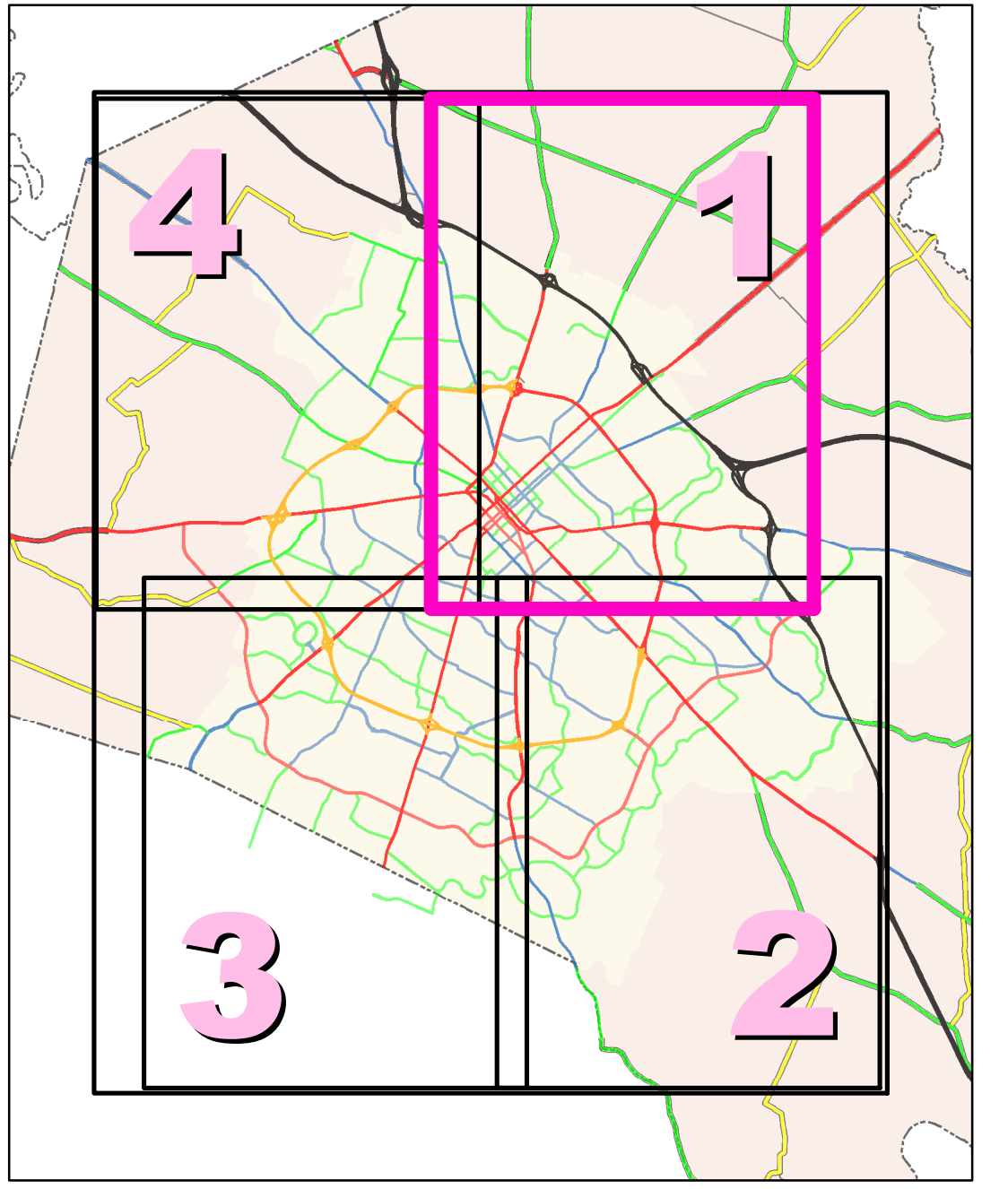


Page Key

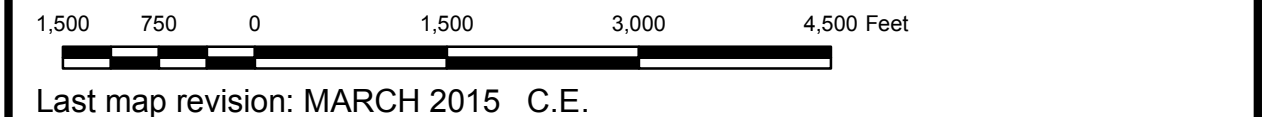


- Count Stations**
- ATR
 - Full Coverage
 - ▲ Classification
 - △ Adjacent
 - ✚ Termini
- Functional Classification**
- Rural Interstate
 - Rural Principal Arterial
 - Rural Minor Arterial
 - Rural Major Collector
 - Rural Minor Collector
 - Urban Interstate
 - Urban Freeways & Expressways
 - Urban Principal Arterial
 - Urban Minor Arterial Street
 - Urban Collector Street
 - Rural & Urban Local
- CS-0000** Functionally Classified Road No.
- Bridge
 - Railroad
 - Stream
 - City/Town
 - Airport
 - Federal Aid Urbanized Area 2000
 - Incorporated Area
 - Lake
 - State Park
 - National Park or Recreation Area
 - Defense Facility
 - Wildlife Area
 - Geological Area
 - State, National, or Private Forest

The Kentucky Transportation Cabinet does not warrant that the information contained on this map is accurate or complete. The Kentucky Transportation Cabinet makes no warranty that it is based on the best available information or a given time but declines any and all representations and warranties made with respect to this map by any contributing source as to its contents, whether expressed, implied, or statutory, including but not limited to, warranties of title, merchantability, and fitness for a particular purpose. Incorporated data boundaries are based on KRS 156.475 filings recorded in the Kentucky Secretary of State's Office.

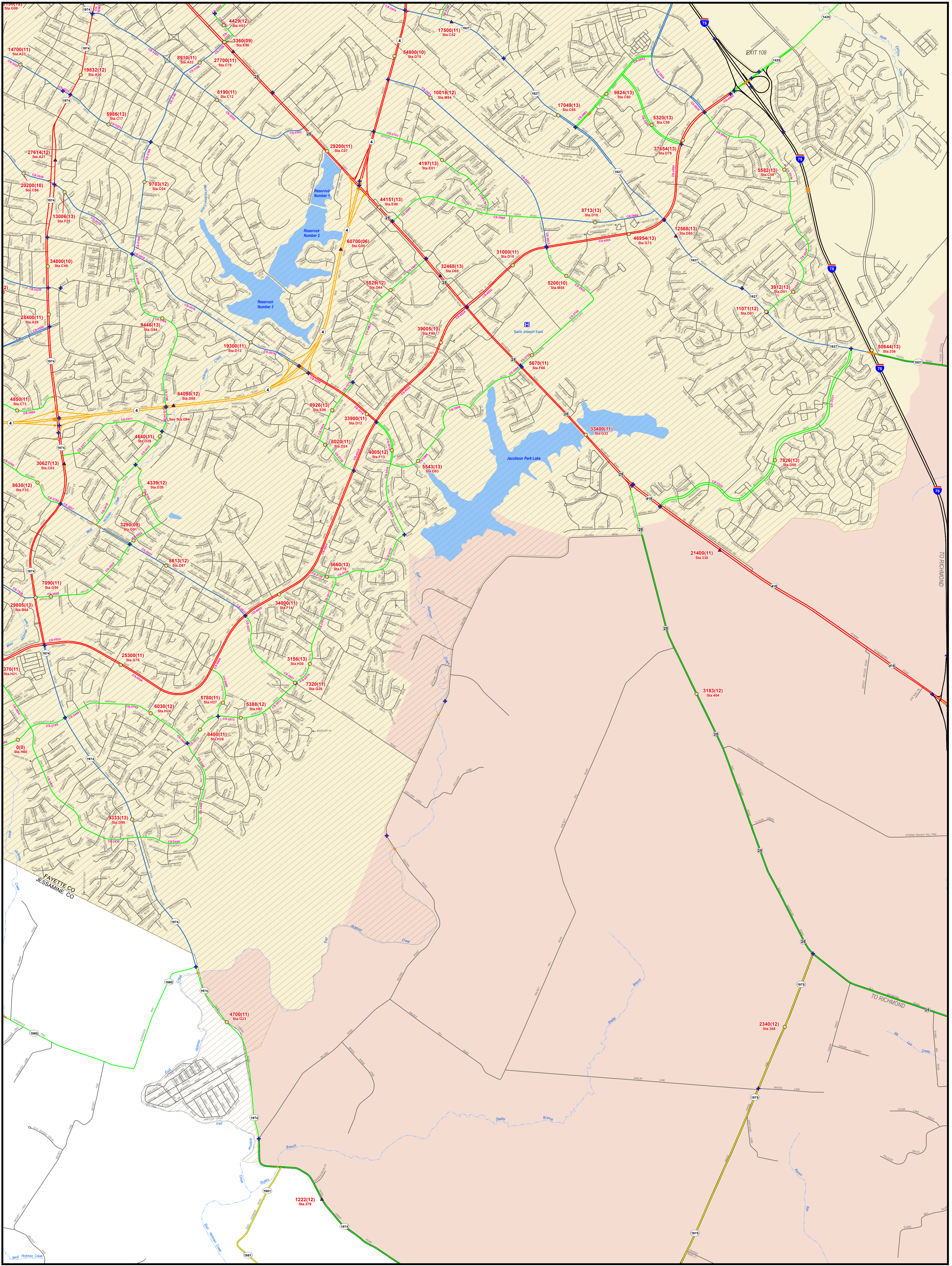


Traffic Station Counts
LEXINGTON, FAYETTE AND JESSAMINE COUNTIES

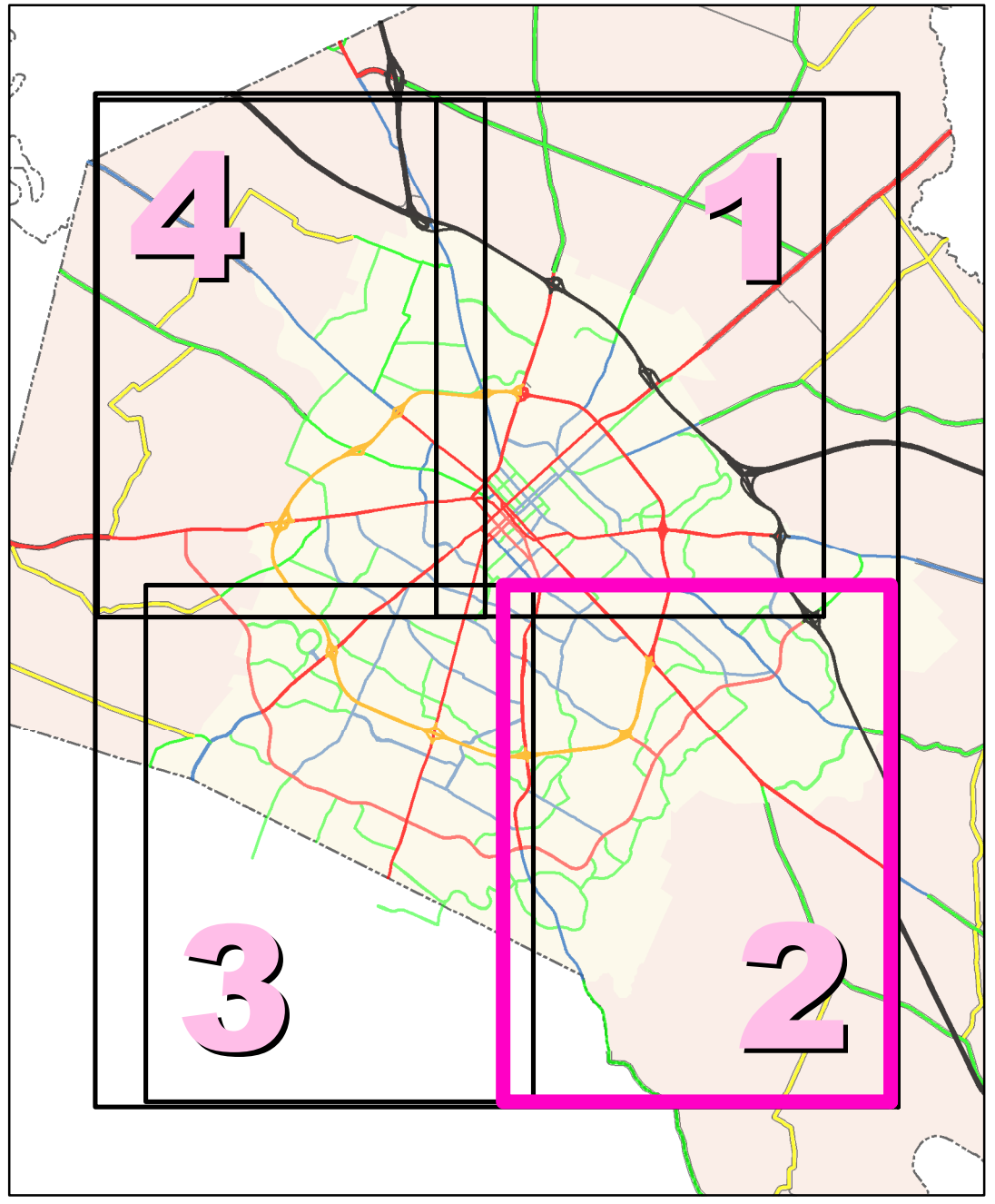


Last map revision: MARCH 2015 C.E.
 Latest traffic count date for each station is indicated on the map in parentheses after the actual traffic count. For the most current traffic count information, please refer to the Counts Database Program (CTS) found on the Division of Planning website.
www.planning.kytc.ky.gov
 Station locations are plotted at segment midpoints where actual mileposts have not been verified in the field.
 Kentucky State Plane Coordinate System (NAD-83)

Traffic Station Counts LEXINGTON, FAYETTE AND JESSAMINE COUNTY KENTUCKY 034 & 057



Page Key



Count Stations

- ATR
- Full Coverage
- ▲ Classification
- △ Adjacent
- ✚ Termini

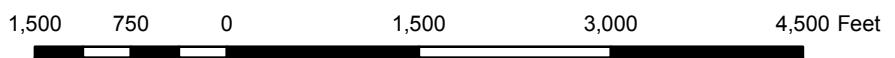
Functional Classification

- Rural Interstate
- Rural Principal Arterial
- Rural Minor Arterial
- Rural Major Collector
- Rural Minor Collector
- Urban Interstate
- Urban Freeways & Expressways
- Urban Principal Arterial
- Urban Minor Arterial Street
- Urban Collector Street
- Rural & Urban Local
- CS-0000 Functionally Classified Road No.
- Bridge
- Railroad
- Stream
- City/Town
- ✈ Airport
- 🏠 Federal Aid Urbanized Area 2000
- 🏘 Incorporated Area
- 🌊 Lake
- 🌳 State Park
- 🌳 National Park or Recreation Area
- 🏰 Defense Facility
- 🌿 Wildlife Area
- 🌿 Geological Area
- 🌲 State, National, or Private Forest

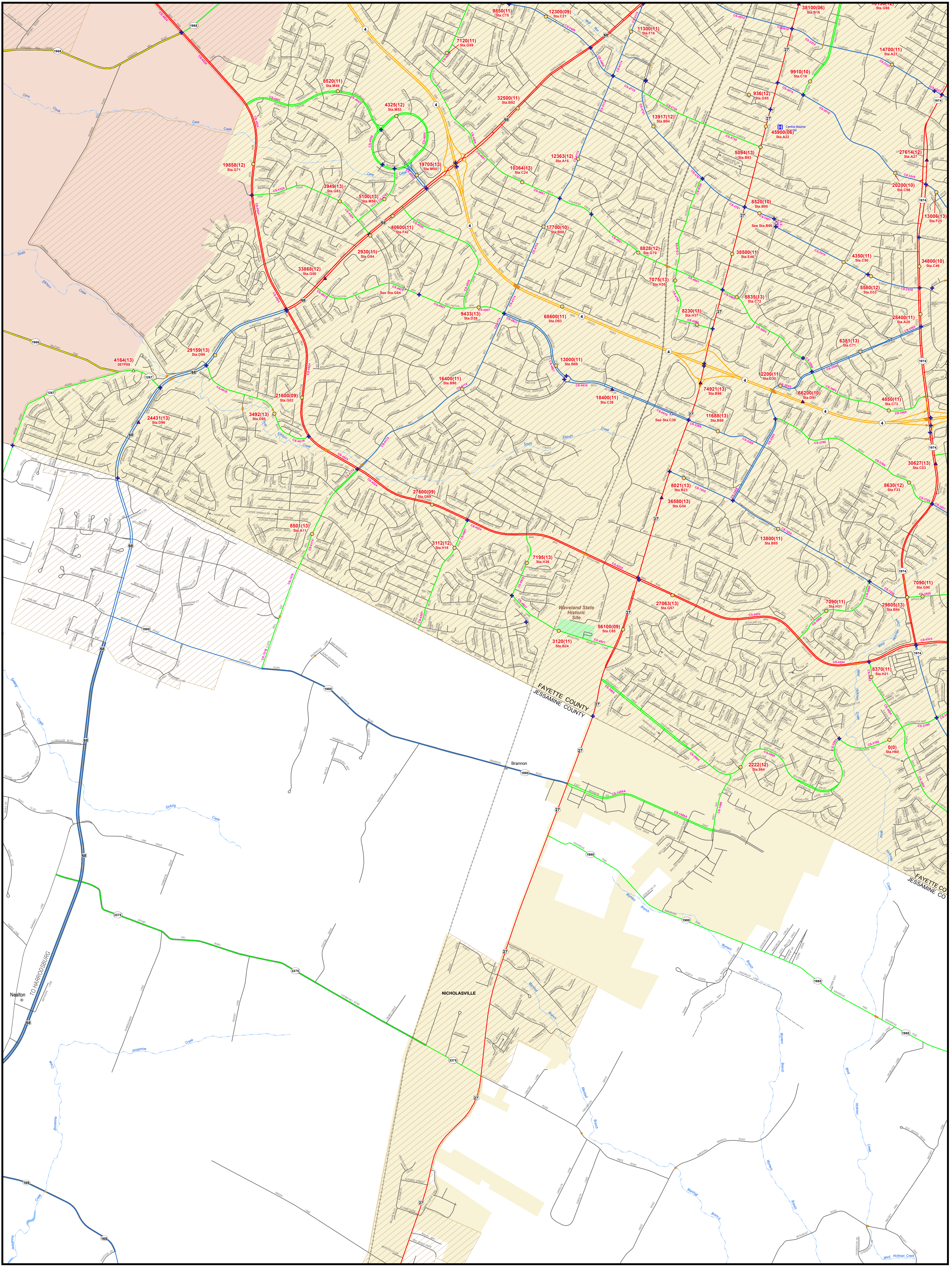
The Kentucky Transportation Cabinet does not warrant that the information contained on this map is accurate or complete. The Kentucky Transportation Cabinet makes this statement and is made to ensure the completeness of road network portrayal and it is based on the best available information as of the date that decisions were made and all representations and warranties made with respect to this map by any contributing source as to its contents, whether expressed, implied, or statutory, including but not limited to, accuracy of the measurements and street names for a particular location. Incorporated data boundaries are based on KYSS 814,475 Rings recorded in the Kentucky Secretary of State's Office.



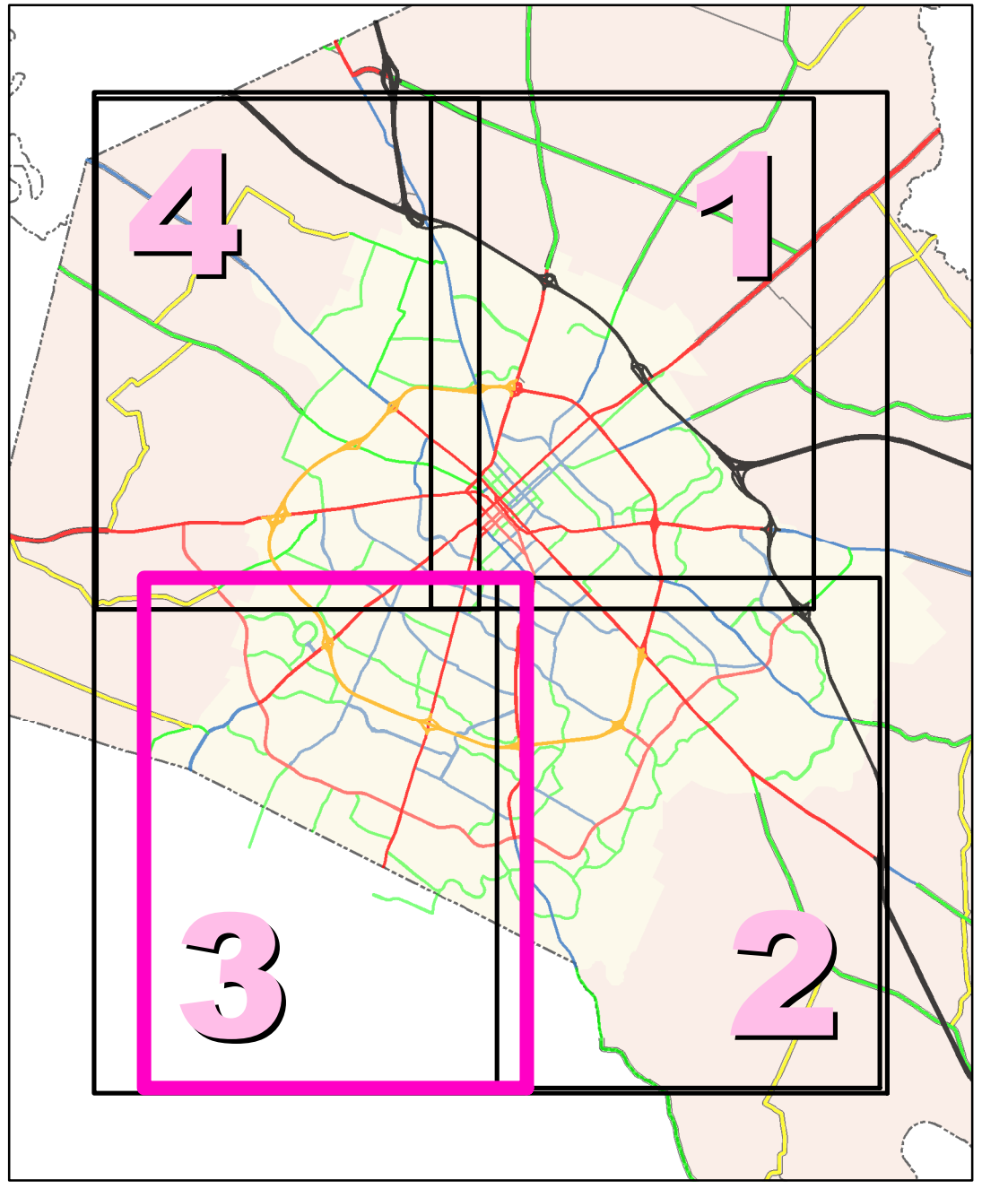
Traffic Station Counts
LEXINGTON, FAYETTE AND JESSAMINE COUNTIES



Last map revision: MARCH 2015 C.E.
 Latest traffic count date for each station is indicated on the map in parentheses after the actual traffic count. For the most current traffic count information, please refer to the Counts Database Program (CTS) found on the Division of Planning website.
www.planning.kytc.ky.gov
 Station locations are plotted at segment midpoints where actual milepoints have not been verified in the field.
 Kentucky State Plane Coordinate System (NAD-83)



Page Key

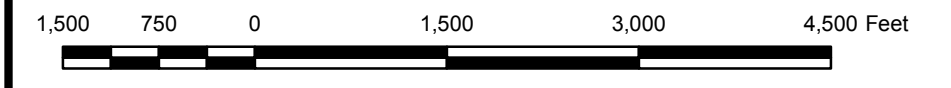


- Count Stations**
- ATR
 - Full Coverage
 - ▲ Classification
 - △ Adjacent
 - ✚ Termini
- Functional Classification**
- Rural Interstate
 - Rural Principal Arterial
 - Rural Minor Arterial
 - Rural Major Collector
 - Rural Minor Collector
 - Urban Interstate
 - Urban Freeways & Expressways
 - Urban Principal Arterial
 - Urban Minor Arterial Street
 - Urban Collector Street
 - Rural & Urban Local
 - CS-0000 Functionally Classified Road No.
 - Bridge
 - Railroad
 - Stream
 - City/Town
 - ✈ Airport
 - Federal Aid Urbanized Area 2000
 - Incorporated Area
 - Lake
 - State Park
 - National Park or Recreation Area
 - Defense Facility
 - Wildlife Area
 - Geological Area
 - State, National, or Private Forest

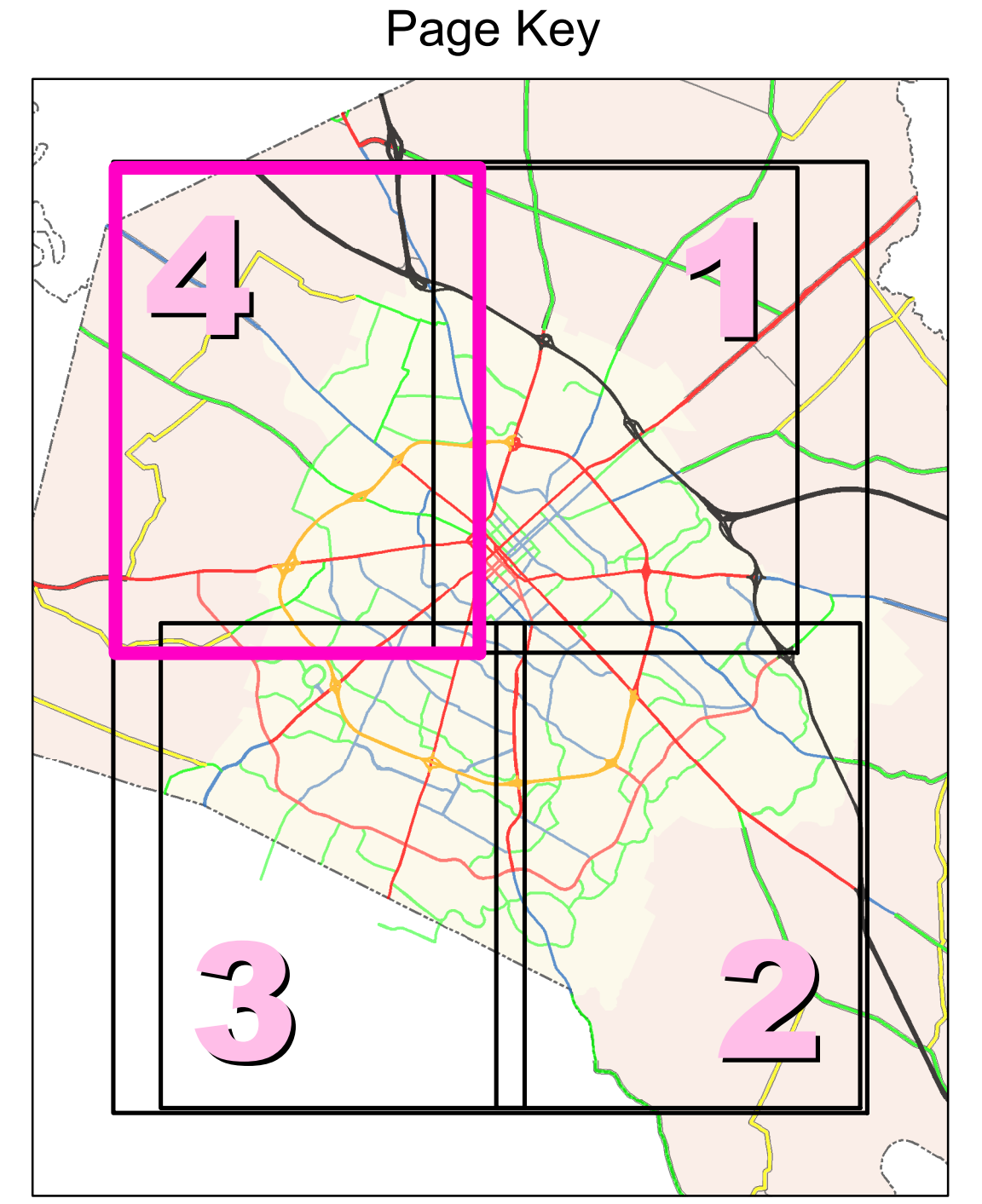
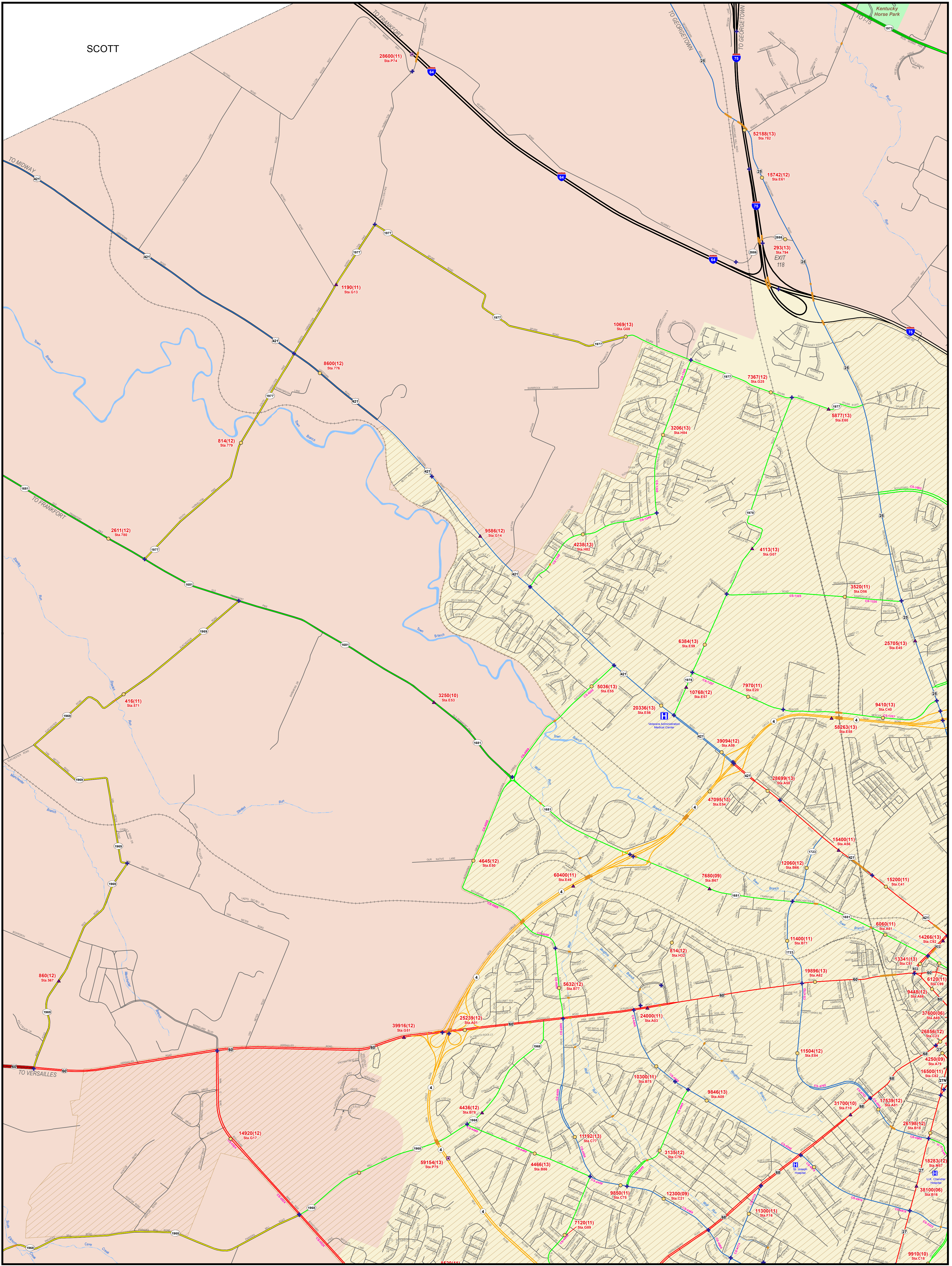
The Kentucky Transportation Cabinet does not warrant that the information contained on this map is accurate or complete. The Kentucky Transportation Cabinet makes no warranty and is not liable for the consequences of any reliance on or use of the information contained on this map. The user assumes all responsibility for the accuracy and completeness of the information contained on this map. The user assumes all responsibility for the accuracy and completeness of the information contained on this map. The user assumes all responsibility for the accuracy and completeness of the information contained on this map.



Traffic Station Counts
LEXINGTON, FAYETTE AND JESSAMINE COUNTIES



Last map revision: MARCH 2015 C.E.
 Latest traffic count date for each station is indicated on the map in parentheses after the actual traffic count. For the most current traffic count information, please refer to the Counts Database Program (CTS) found on the Division of Planning website.
www.planning.kytc.ky.gov
 Station locations are plotted at segment midpoints where actual milepoints have not been verified in the field.
 Kentucky State Plane Coordinate System (NAD-83)

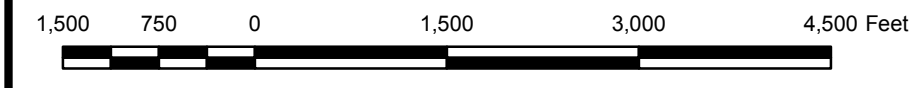


- Count Stations**
- ATR
 - Full Coverage
 - ▲ Classification
 - ▲ Adjacent
 - ✚ Termini
- Functional Classification**
- Rural Interstate
 - Rural Principal Arterial
 - Rural Minor Arterial
 - Rural Major Collector
 - Rural Minor Collector
 - Urban Interstate
 - Urban Freeways & Expressways
 - Urban Principal Arterial
 - Urban Minor Arterial Street
 - Urban Collector Street
 - Rural & Urban Local
- CS-0000 Functionally Classified Road No.
- Bridge
 - Railroad
 - Stream
 - City/Town
 - ✈ Airport
 - Federal Aid Urbanized Area 2000
 - Incorporated Area
 - Lake
 - State Park
 - National Park or Recreation Area
 - Defense Facility
 - Wildlife Area
 - Geological Area
 - State, National, or Private Forest

The Kentucky Transportation Cabinet does not warrant that the information contained on this map is accurate or complete. The Kentucky Transportation Cabinet makes no guarantee and is not liable for the consequences of any reliance on this information, whether expressed, implied, or statutory, including but not limited to, any reliance on the map, its data, or any other information contained herein. Information is provided as a public service. Information is provided as a public service. Information is provided as a public service.



Traffic Station Counts
LEXINGTON, FAYETTE AND JESSAMINE COUNTIES



Last map revision: MARCH 2015 C.E.
 Latest traffic count date for each station is indicated on the map in parentheses after the actual traffic count. For the most current traffic count information, please refer to the Counts Database Program (CTS) found on the Division of Planning website.
www.planning.kytc.ky.gov
 Station locations are plotted at segment midpoints where actual milepoints have not been verified in the field.
 Kentucky State Plane Coordinate System (NAD-83)